

# How to Make a Line Graph with Phase Lines in Excel 2003 & XP

Performance Aid

## Purpose

The purpose of this document is to provide you with instructions to reference as you create a line graph in Excel 2003 & XP. It will provide you with step-by-step directions that will take you through entering your data, making a graph, adding phase lines, making your graph look professional, and inserting it into a document.

---

## Entering your data

1. Use three columns
  - a. The first column is for your horizontal x-axis
    - i. Write in **dates** or **sessions** here
      1. A “session” is just a fancy name for an observation period
  - b. The second column is your **collected data**
    - i. Place in this column your
      1. **frequency** count
      2. **time** (for duration and latency)
      3. **level** measurement (make sure to give each level a number)
        - a. These can be either **totals** or **averages** per session
  - c. Finally, the third column is for **phase changes**
    - i. You won't need to know this for this current assignment, but after you implement your intervention, this will come in handy. So remember it!
    - ii. When entering in a phase change – make sure that the two cells to the left are empty
    - iii. Also, make sure that the number that is entered in for a phase change is equal to “0”

Enter your data in  
frequency, time, or  
levels here

Enter your *dates* or  
*sessions* here

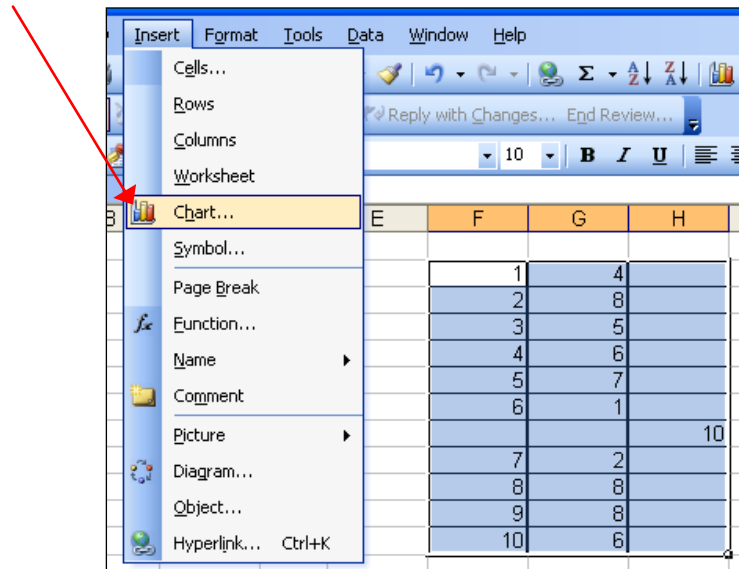
C	D	E
1	4	
2	2	
3	7	
4	5	
5	8	
6	1	
		0
7	3	
8	6	
9	9	
10	4	

If you need a phase change, make sure that the left two cells are empty, and that the value entered in this column is equal “0”

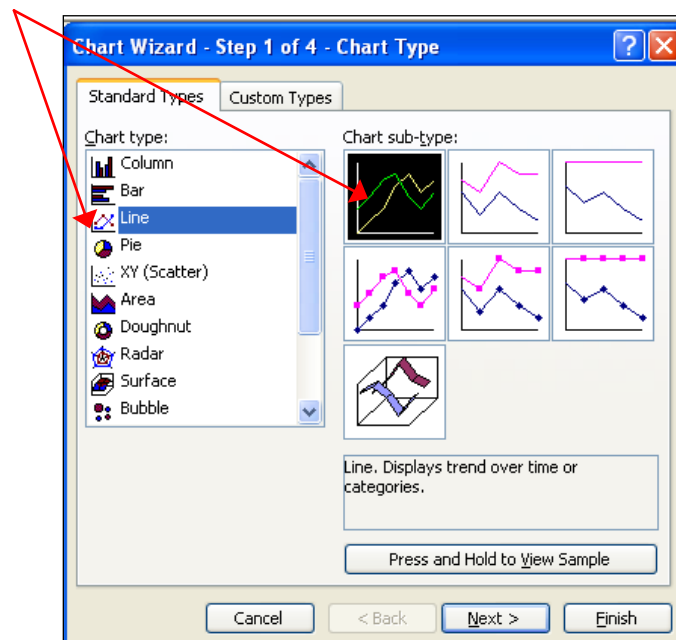
## Graphing the data

### Selecting the Graph

1. To graph your data – highlight the **right two** columns by:
  - a. Clicking in the **top-left cell**,
  - b. Pressing and holding the **Shift** key on your keyboard, and
  - c. Clicking in the **bottom-right cell**
2. Now that you have the data collected, click on **Insert** in our menu, and select **Chart**

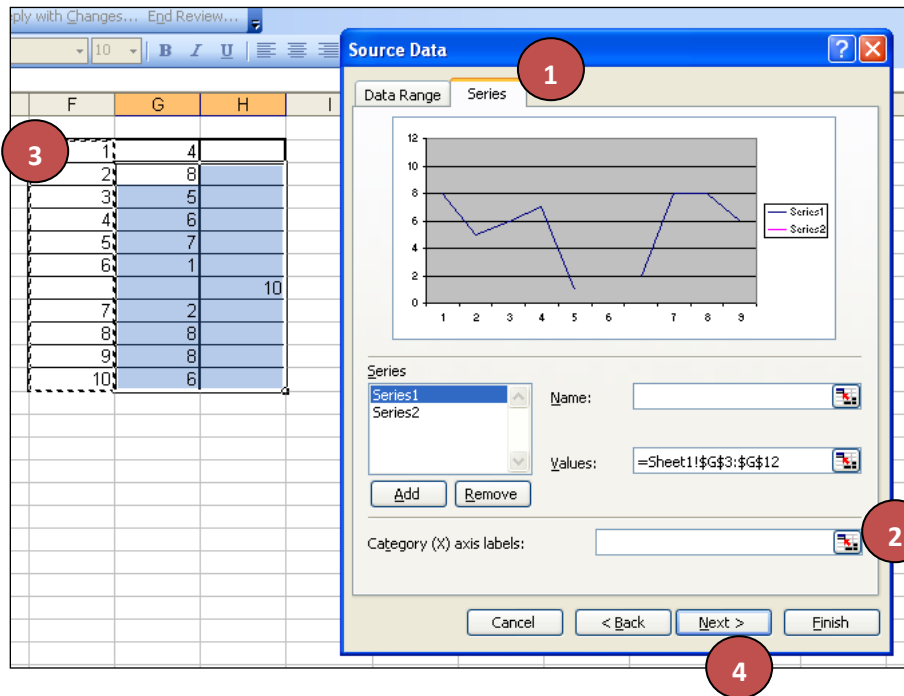


3. A pop-up window will appear. Click on **Line** on the left
4. Then, under “Chart sub-type”, choose the **top-left** type of chart and click **Next**



Adding your horizontal axis

1. Now, click on **Series** in the upper left
2. Then click the button next to “Category (X) axis labels”
3. The window will be replaced by a smaller one, **select your first column**
  - a. Click on the **top cell** in that column,
  - b. Press and hold the **Shift** key on your keyboard, and
  - c. Click on the **bottom cell** of that column
    - i. *The entire selection should have a dashed line moving around it if you did it correctly*
  - d. Then Press **Enter** on your keyboard
4. Finally, click **Next**

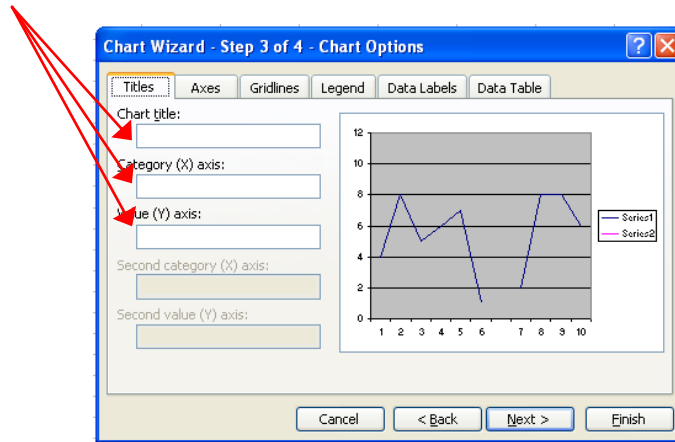


## Finishing Touches

### Titles

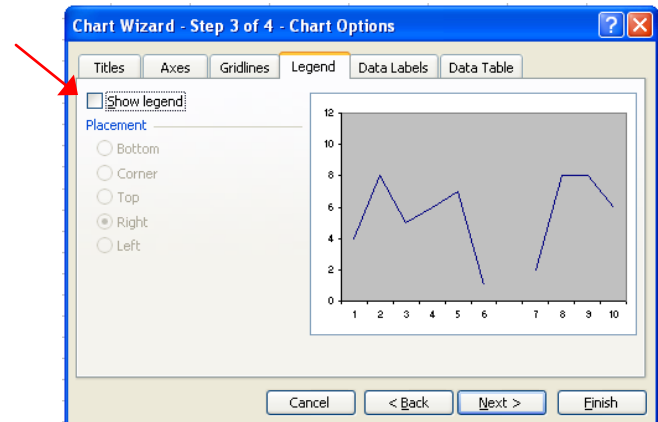
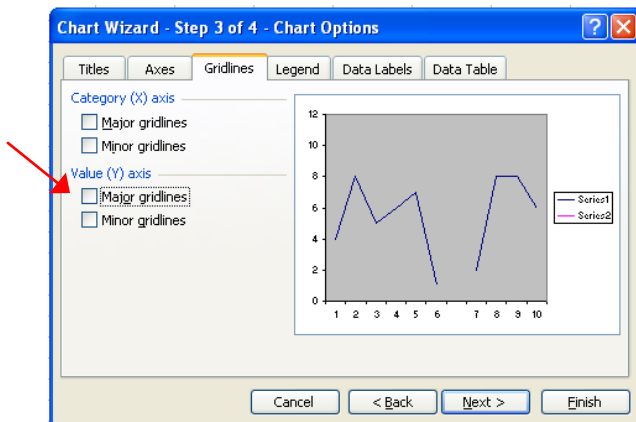
On this screen of the window, you'll add in some finishing touches

1. First, Add in your **graph title**, and **titles for your axes**
  - a. Your "Category (X) axis" should be labeled **Sessions** or **Date**
  - b. Your Value (Y) axis" should be labeled either **Frequency**, **Rate**, **Time**, or **Level** depending on the type of data that you collected



### Gridlines & Legend

1. Then get rid of your gridlines by selecting the **Gridlines** tab and erasing the check next to "Major Gridlines"
2. Also, get rid of your legend by selecting the **Legend** tab and erasing the check next to "Show Legend"



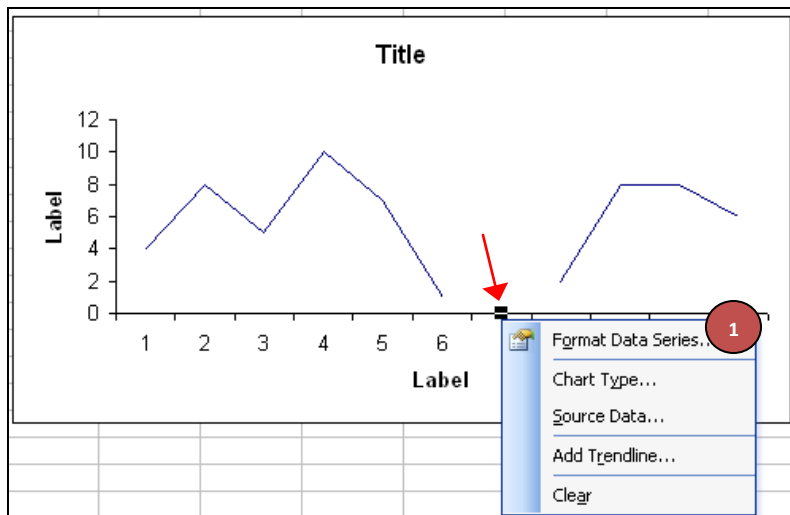
3. When you have completed all of this, press **Finish**
4. Presto! You now have a Graph!
  - a. But there are a few other changes that you need to make to it...

### Eliminating the background color

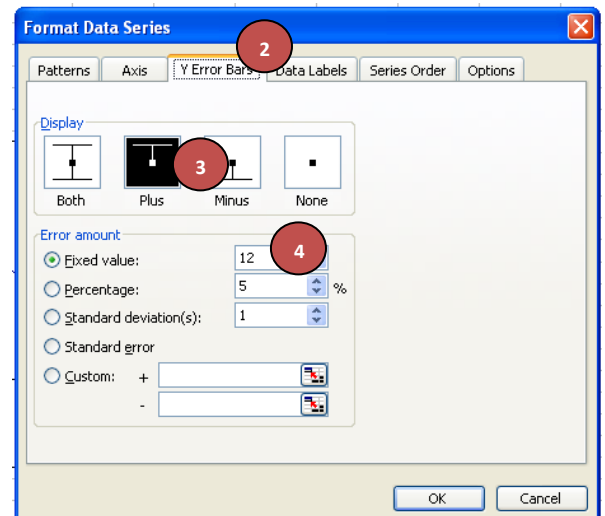
1. To make this graph professional you will want a white background,
  - a. Click on the gray background and press the **Delete** key on your keyboard

### **Making phase lines**

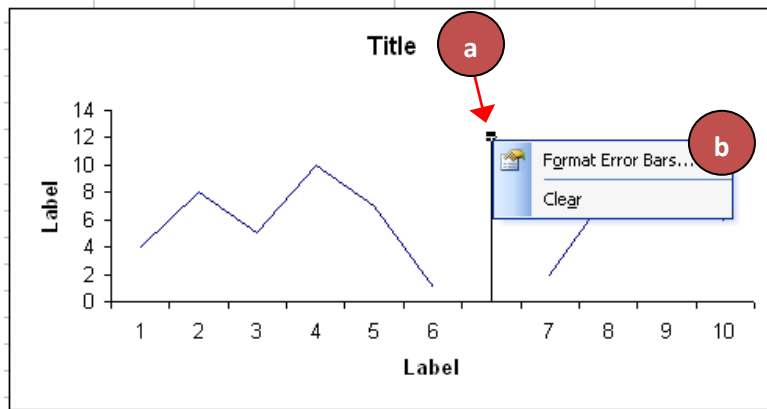
1. To make a phase line find the first area where you have a gap in your line,
  - a. Along the horizontal axis, **right-click** in the middle of that area until you **highlight a single point** there and a small menu pops up that has “*Format Data Series*” at the top
    - i. You may have to try this multiple times as the point you are looking for is invisible, so don't give up!
    - ii. If you really can't find it, make sure that you had only entered in zeros into your third data column
  - b. Click on **Format Data Series**



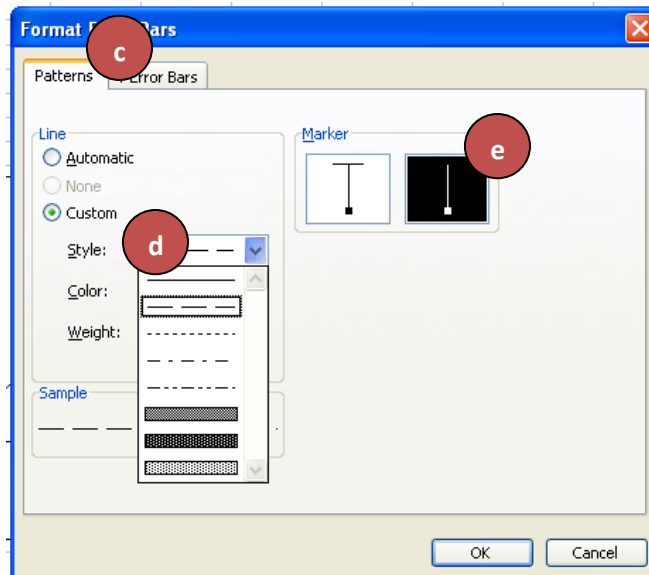
2. A pop-up window will appear, select the **Y Error Bars** tab,
3. Under “*Display*”, click on **Plus**
4. Then, next to “*Error Amount*” enter in the highest number of your vertical axis (for my graph it was “12”)



5. Now you have a line on your graph, but we need to make it dashed
  - a. **Right-click** on the top of the line until a small menu pops up,
  - b. Click on **Format Error Bars**



- c. Select the **Patterns** tab
- d. Next to “**Style**”, select the dashed option
- e. Under “**Marker**”, choose the option on the right



### **Inserting the graph into a document**

1. To insert the graph into a document, simply **right-click**,
2. select **Copy**, and
3. then **Paste** into your document